

**YUC SMART INSERTS 2013**

## YOUR UNIVERSAL CHOICE

### Production characteristics

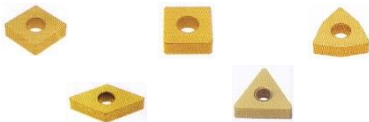
- Small to middle sized series
- Daily various production set ups

### Tooling features

- Extended application area
- Reliable performance

### YUC Edition

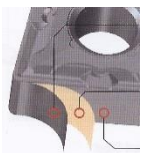
- 5 Negative shapes



- 4 Positive shapes



- Universal coated grade



PVD layer

PVD layer

fine grain substrate

**More insert styles available!**

## VARIOUS MATERIALS

### Workpiece material range

**P** - Steel

**M** - Stainless steel

**K** - Cast iron

**N** - Non ferritic materials

**S** - Heat resistant alloys

- 5 universal chip control geometries

..MT MSE



..MG MSE



..MP FSE



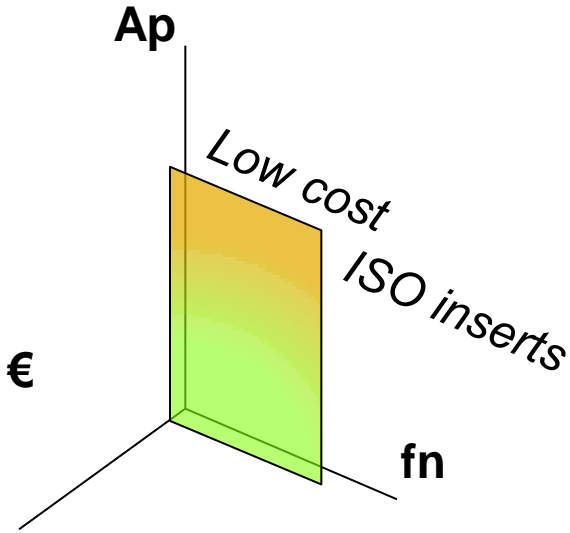
..UX L / R



..GG ALU

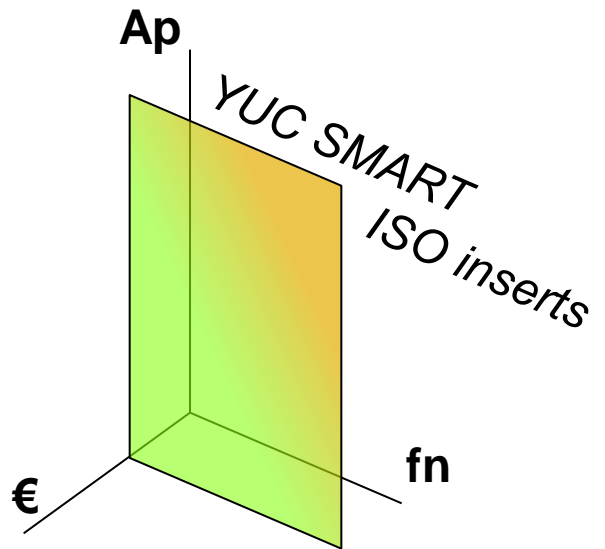


# YUC - MARKET POSITION



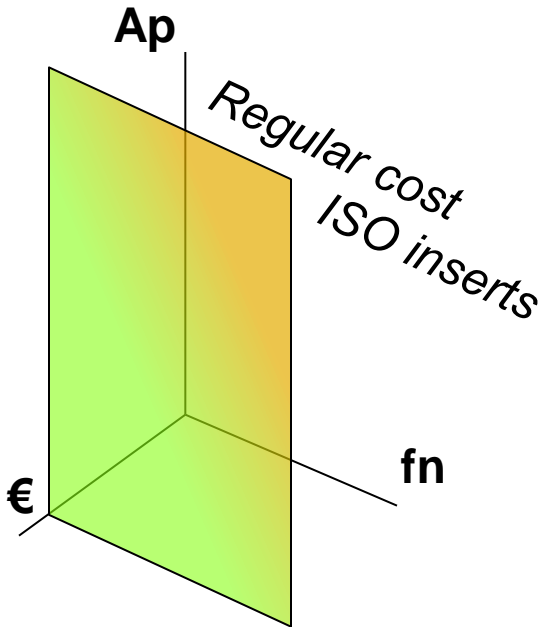
Low price level  
Average performance

**Weak price / performance ratio**



Competative price level  
High performance

**Strong price / performance ratio**



High price level  
High performance

**Average price / performance ratio**

# YUC SMART INSERT CODE

**T N M P 16 04 08 FSE PVD PMKS H**

## *- Insert shape and corner angle*

C shape	-	80°
D shape	-	55°
S shape	-	90°
T shape	-	60°
W shape	-	80°

**T N M P 16 04 08 FSE PVD PMKS H**

## *- Release angle*

B	-	5°
C	-	7°
N	-	0°

**T N M P 16 04 08 FSE PVD PMKS H**

## *- Tolerance*

G - fine	d±0.025	m±0.025	t±0.13
M - coarse	d±0.005	m±0.080	t±0.13

**T N M P 16 04 08 FSE PVD PMKS H**

## *- Square section*

G / P / X	-	double sided	negative insert
M	-	single sided	negative insert
T	-	single sided	positive insert

**T N M P 16 04 08 FSE PVD PMKS H**

## *- Approximate metric cutting length*

06	-	6 mm
07	-	7 mm
08	-	8 mm
09	-	9 mm
11	-	11 mm
12	-	12 mm
15	-	15 mm
16	-	16 mm
19	-	19 mm
22	-	22 mm
25	-	25 mm

**T N M P 16 04 08 FSE PVD PMKS H**

## *- Insert thickness metric*

02	-	2.38 mm
03	-	3.18 mm
T3	-	3.97 mm
04	-	4.76 mm
06	-	6.35 mm
07	-	7.94 mm
09	-	9.52 mm

**T N M P 16 04 08 FSE PVD PMKS H**

**- Corner radius metric**

02	- 0.2 mm
04	- 0.4 mm
08	- 0.8 mm
12	- 1.2 mm
16	- 1.6 mm
24	- 2.4 mm

**T N M P 16 04 08 FSE PVD PMKS H**

**- Chip breaker type**

FF	- fine finishing
MF	- medium finishing
MFE	- medium finishing extended
UF	- universal finishing
VFS	- very fine standard
FSE	- fine standard extended
MS	- medium standard
MSE	- medium standard extended
US	- universal standard
CS	- coarse standard
WS	- wiper standard
VFR	- very fine roughing
FR	- fine roughing
MR	- medium roughing
UR	- universal roughing
CR	- coarse roughing
ALFF	- ALU fine finishing
ALUS	- ALU universal standard
ALVFS	- ALU very fine finishing
ALFSE	- ALU fine standard extended

**T N M P 16 04 08 FSE PVD PMKS H**

**- Substrate and coating**

PVD	- physical vapour deposition
CVD	- chemical vapour deposition
NON	- not coated

**T N M P 16 04 08 FSE PVD PMKS H**

**- Workpiece material**

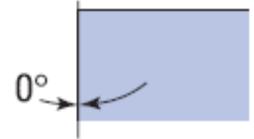
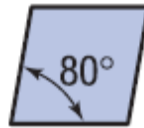
<b>P</b>	- steel
<b>M</b>	- stainless steel
<b>K</b>	- cast iron
<b>S</b>	- heat resistant alloys
<b>N</b>	- non ferretic materials

**T N M P 16 04 08 FSE PVD PMKS H**

**- Application and hardness cutting material**

H	- high wear resistant
U	- universal
T	- tough

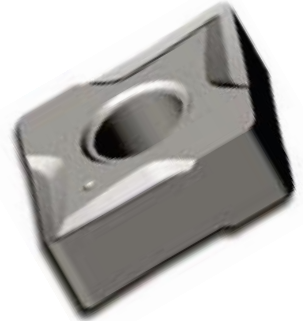
# CN.. negative shape - 80°



YUC

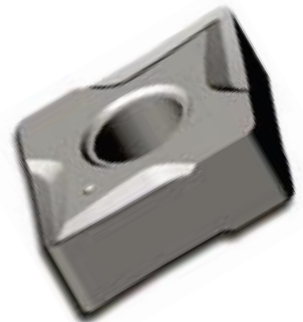
## Fine standard machining with CNMP 120408 FSE PVD PMKS H

P	M	K	S	N
Vc: 120 - 220	Vc: 80 - 140	Vc: 120 - 210	Vc: 20 - 60	
Ap: 0.30 - 1.50	Ap: 0.30 - 1.50	Ap: 0.30 - 1.50	Vc: 0.30 - 1.50	
fn: 0.20 - 0.40	fn: 0.18 - 0.32	fn: 0.20 - 0.40	fn: 0.16 - 0.28	
Amount	30 pieces	50 pieces	≥ 100 pieces	
Net price in €	3.80	3.30	3.10	

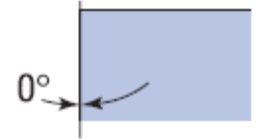
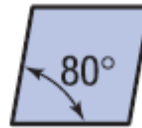


## Fine standard machining with CNMP 120412 FSE PVD PMKS H

P	M	K	S	N
Vc: 120 - 220	Vc: 80 - 140	Vc: 120 - 210	Vc: 20 - 60	
Ap: 0.50 - 2.50	Ap: 0.50 - 2.50	Ap: 0.50 - 2.50	Vc: 0.50 - 2.50	
fn: 0.25 - 0.50	fn: 0.22 - 0.40	fn: 0.25 - 0.50	fn: 0.20 - 0.36	
Amount	30 pieces	50 pieces	≥ 100 pieces	
Net price in €	3.80	3.30	3.10	



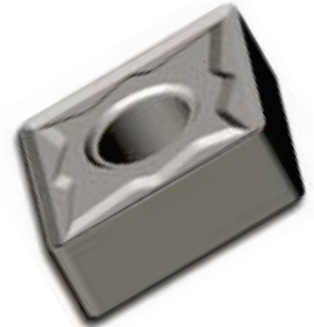
# CN.. negative shape - 80°



YUC

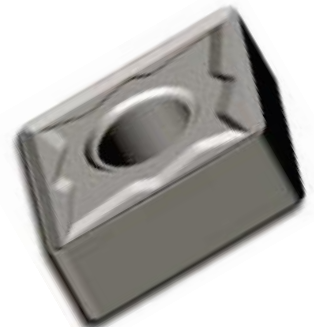
## Standard machining with CNMG 120404 MSE PVD PMK H

P	M	K	S	N
Vc: 120 - 220	Vc: 80 - 140	Vc: 120 - 210		
Ap: 0.20 - 2.00	Ap: 0.20 - 2.00	Ap: 0.20 - 2.00		
fn: 0.10 - 0.20	fn: 0.10 - 0.18	fn: 0.10 - 0.20		
Amount	30 pieces	50 pieces	≥ 100 pieces	
Net price in €	3.80	3.30	3.10	



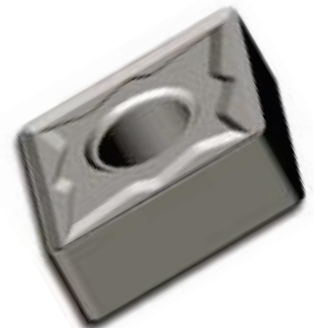
## Standard machining with CNMG 120408 MSE PVD PMK H

P	M	K	S	N
Vc: 120 - 220	Vc: 80 - 140	Vc: 120 - 210		
Ap: 0.30 - 3.00	Ap: 0.30 - 3.00	Ap: 0.30 - 3.00		
fn: 0.15 - 0.30	fn: 0.15 - 0.26	fn: 0.15 - 0.30		
Amount	30 pieces	50 pieces	≥ 100 pieces	
Net price in €	3.80	3.30	3.10	



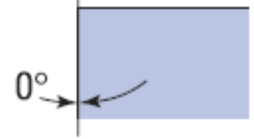
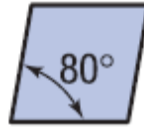
## Standard machining with CNMG 120412 MSE PVD PMK H

P	M	K	S	N
Vc: 120 - 220	Vc: 80 - 140	Vc: 120 - 210		
Ap: 0.40 - 4.00	Ap: 0.40 - 4.00	Ap: 0.40 - 4.00		
fn: 0.20 - 0.40	fn: 0.20 - 0.32	fn: 0.20 - 0.40		
Amount	30 pieces	50 pieces	≥ 100 pieces	
Net price in €	3.80	3.30	3.10	



More insert styles available

# CN.. negative shape - 80°



YUC

## Fine standard machining with CNGG 120404 ALFSE NON N H

P	M	K	S	N
				Vc: 150 - 600
				Ap: 0.30 - 2.00
				fn: 0.08 - 0.20
Amount	30 pieces	50 pieces	≥ 100 pieces	
Net price in €	4.10	3.50	3.30	



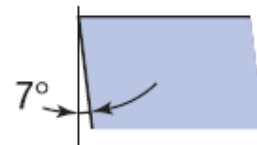
## Fine standard machining with CNGG 120408 ALFSE NON N H

P	M	K	S	N
				Vc: 150 - 600
				Ap: 0.50 - 3.00
				fn: 0.12 - 0.40
Amount	30 pieces	50 pieces	≥ 100 pieces	
Net price in €	4.10	3.50	3.30	





# CC.. positive shape - 80°



YUC

## Standard machining with CCMT 09T304 MSE PVD PMK H

P	M	K	S	N
Vc: 120 - 220	Vc: 80 - 140	Vc: 120 - 210		
Ap: 0.20 - 1.50	Ap: 0.20 - 1.50	Ap: 0.20 - 1.50		
fn: 0.10 - 0.20	fn: 0.10 - 0.16	fn: 0.10 - 0.20		
Amount	30 pieces	50 pieces	≥ 100 pieces	
Net price in €	3.40	2.90	2.60	



## Standard machining with CCMT 09T308 MSE PVD PMK H

P	M	K	S	N
Vc: 120 - 220	Vc: 80 - 140	Vc: 120 - 210		
Ap: 0.25 - 2.50	Ap: 0.25 - 2.50	Ap: 0.25 - 2.50		
fn: 0.15 - 0.25	fn: 0.12 - 0.20	fn: 0.15 - 0.25		
Amount	30 pieces	50 pieces	≥ 100 pieces	
Net price in €	3.40	2.90	2.60	



## Standard machining with CCMT 120408 MSE PVD PMK H

P	M	K	S	N
Vc: 120 - 220	Vc: 80 - 140	Vc: 120 - 210		
Ap: 0.50 - 3.50	Ap: 0.50 - 3.50	Ap: 0.50 - 3.50		
fn: 0.15 - 0.25	fn: 0.12 - 0.20	fn: 0.15 - 0.25		
Amount	30 pieces	50 pieces	≥ 100 pieces	
Net price in €	3.90	3.40	3.20	



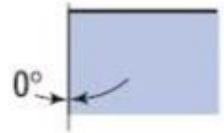
## Standard machining with CCMT 120412 MSE PVD PMK H

P	M	K	S	N
Vc: 120 - 220	Vc: 80 - 140	Vc: 120 - 210		
Ap: 0.50 - 3.50	Ap: 0.50 - 3.50	Ap: 0.50 - 3.50		
fn: 0.25 - 0.40	fn: 0.20 - 0.32	fn: 0.25 - 0.40		
Amount	30 pieces	50 pieces	≥ 100 pieces	
Net price in €	3.90	3.40	3.20	



More insert styles available

# DN.. negative shape - 55°



YUC

## Standard machining with DNMG 110404 MSE PVD PMK H

P	M	K	S	N
Vc: 120 - 220	Vc: 80 - 140	Vc: 120 - 210		
Ap: 0.20 - 1.50	Ap: 0.20 - 1.50	Ap: 0.20 - 1.50		
fn: 0.10 - 0.20	fn: 0.10 - 0.16	fn: 0.10 - 0.20		
Amount	30 pieces	50 pieces	≥ 100 pieces	
Net price in €	3.80	3.30	3.10	



## Standard machining with DNMG 110408 MSE PVD PMK H

P	M	K	S	N
Vc: 120 - 220	Vc: 80 - 140	Vc: 120 - 210		
Ap: 0.40 - 2.50	Ap: 0.40 - 2.50	Ap: 0.40 - 2.50		
fn: 0.15 - 0.30	fn: 0.12 - 0.24	fn: 0.15 - 0.30		
Amount	30 pieces	50 pieces	≥ 100 pieces	
Net price in €	3.80	3.30	3.10	



## Fine standard machining with DNMG 110404 ALFSE NON N H

P	M	K	S	N
				Vc: 150 - 600
				Ap: 0.20 - 1.50
				fn: 0.10 - 0.20
Amount	30 pieces	50 pieces	≥ 100 pieces	
Net price in €	4.10	3.50	3.30	



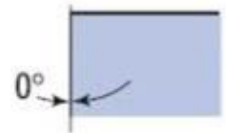
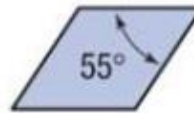
## Fine standard machining with DNMG 110408 ALFSE NON N H

P	M	K	S	N
				Vc: 150 - 600
				Ap: 0.30 - 2.50
				fn: 0.15 - 0.30
Amount	30 pieces	50 pieces	≥ 100 pieces	
Net price in €	4.10	3.50	3.30	



More insert styles available

# DN.. negative shape - 55°



YUC

## Standard machining with DNMG 150404 MSE PVD PMK H

P	M	K	S	N
Vc: 120 - 220	Vc: 80 - 140	Vc: 120 - 210		
Ap: 0.20 - 2.00	Ap: 0.20 - 2.00	Ap: 0.20 - 2.00		
fn: 0.10 - 0.20	fn: 0.10 - 0.16	fn: 0.10 - 0.20		
Amount	30 pieces	50 pieces	≥ 100 pieces	
Net price in €	4.60	4.10	3.80	



## Standard machining with DNMG 150408 MSE PVD PMK H

P	M	K	S	N
Vc: 120 - 220	Vc: 80 - 140	Vc: 120 - 210		
Ap: 0.30 - 3.00	Ap: 0.30 - 3.00	Ap: 0.30 - 3.00		
fn: 0.15 - 0.25	fn: 0.12 - 0.20	fn: 0.15 - 0.25		
Amount	30 pieces	50 pieces	≥ 100 pieces	
Net price in €	4.60	4.10	3.80	



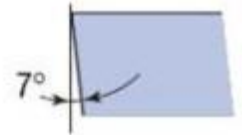
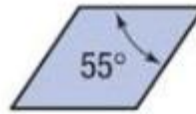
## Standard machining with DNMG 150412 MSE PVD PMK H

P	M	K	S	N
Vc: 120 - 220	Vc: 80 - 140	Vc: 120 - 210		
Ap: 0.50 - 4.00	Ap: 0.50 - 4.00	Ap: 0.50 - 4.00		
fn: 0.20 - 0.35	fn: 0.16 - 0.28	fn: 0.20 - 0.35		
Amount	30 pieces	50 pieces	≥ 100 pieces	
Net price in €	4.60	4.10	3.80	



More insert styles available

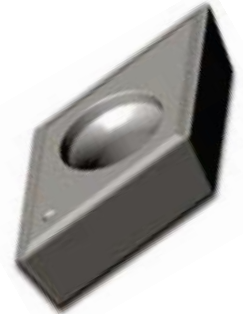
# DC.. positive shape - 55°



YUC

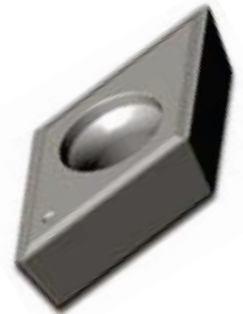
## Standard machining with DCMT 11T304 MSE PVD PMK H

P	M	K	S	N
Vc: 120 - 220	Vc: 80 - 140	Vc: 120 - 210		
Ap: 0.20 - 1.50	Ap: 0.20 - 1.50	Ap: 0.20 - 1.50		
fn: 0.08 - 0.16	fn: 0.08 - 0.14	fn: 0.08 - 0.16		
Amount	30 pieces	50 pieces	≥ 100 pieces	
Net price in €	3.40	2.90	2.60	



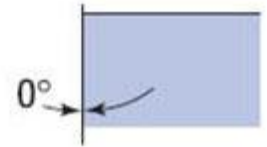
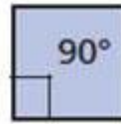
## Standard machining with DCMT 11T308 MSE PVD PMK H

P	M	K	S	N
Vc: 120 - 220	Vc: 80 - 140	Vc: 120 - 210		
Ap: 0.20 - 2.00	Ap: 0.20 - 2.00	Ap: 0.20 - 2.00		
fn: 0.16 - 0.32	fn: 0.12 - 0.24	fn: 0.16 - 0.32		
Amount	30 pieces	50 pieces	≥ 100 pieces	
Net price in €	3.40	2.90	2.60	



More insert styles available

# SN.. negative shape - 90°



YUC

## Standard machining with SNMG 120408 MSE PVD PMK H

P	M	K	S	N
Vc: 120 - 220	Vc: 80 - 140	Vc: 120 - 210		
Ap: 0.50 - 3.00	Ap: 0.50 - 3.00	Ap: 0.50 - 3.00		
fn: 0.15 - 0.30	fn: 0.10 - 0.20	fn: 0.15 - 0.30		
Amount	30 pieces	50 pieces	≥ 100 pieces	
Net price in €	3.80	3.30	3.10	



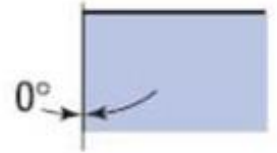
## Standard machining with SNMG 120412 MSE PVD PMK H

P	M	K	S	N
Vc: 120 - 220	Vc: 80 - 140	Vc: 120 - 210		
Ap: 0.70 - 4.00	Ap: 0.70 - 4.00	Ap: 0.70 - 4.00		
fn: 0.25 - 0.35	fn: 0.15 - 0.28	fn: 0.25 - 0.35		
Amount	30 pieces	50 pieces	≥ 100 pieces	
Net price in €	3.80	3.30	3.10	



More insert styles available

# TN.. negative shape - 60°



YUC

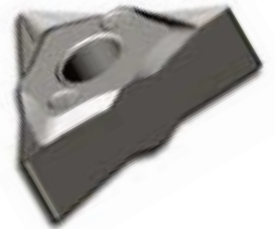
## Fine standard machining with TNMP 160408 FSE PVD PMKS H

P	M	K	S	N
Vc: 120 - 220	Vc: 80 - 140	Vc: 120 - 210	Vc: 20 - 60	
Ap: 0.40 - 2.00	Ap: 0.40 - 2.00	Ap: 0.40 - 2.00	Ap: 0.40 - 2.00	
fn: 0.12 - 0.24	fn: 0.10 - 0.20	fn: 0.12 - 0.24	fn: 0.10 - 0.16	
Amount	30 pieces	50 pieces	≥ 100 pieces	
Net price in €	3.70	3.30	2.90	



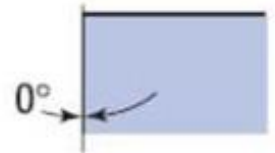
## Fine standard machining with TNGG 160404 ALFSE NON N H

P	M	K	S	N
				Vc: 150 - 600
				Ap: 0.20 - 2.50
				fn: 0.10 - 0.20
Amount	30 pieces	50 pieces	≥ 100 pieces	
Net price in €	4.20	3.70	3.40	



More insert styles available

# TN.. negative shape - 60°



YUC

## Standard machining with TNMG 160404 MSE PVD PMK H

P	M	K	S	N
Vc: 120 - 220	Vc: 80 - 140	Vc: 120 - 210		
Ap: 0.30 - 1.50	Ap: 0.30 - 1.50	Ap: 0.30 - 1.50		
fn: 0.10 - 0.20	fn: 0.10 - 0.18	fn: 0.10 - 0.20		
Amount	30 pieces	50 pieces	≥ 100 pieces	
Net price in €	3.70	3.30	2.90	



## Standard machining with TNMG 160408 MSE PVD PMK H

P	M	K	S	N
Vc: 120 - 220	Vc: 80 - 140	Vc: 120 - 210		
Ap: 0.40 - 2.00	Ap: 0.40 - 2.00	Ap: 0.40 - 2.00		
fn: 0.15 - 0.25	fn: 0.15 - 0.22	fn: 0.15 - 0.25		
Amount	30 pieces	50 pieces	≥ 100 pieces	
Net price in €	3.70	3.30	2.90	



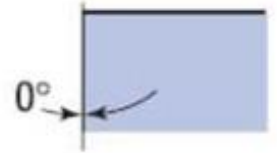
## Standard machining with TNMG 160412 MSE PVD PMK H

P	M	K	S	N
Vc: 120 - 220	Vc: 80 - 140	Vc: 120 - 210		
Ap: 0.50 - 3.00	Ap: 0.50 - 3.00	Ap: 0.50 - 3.00		
fn: 0.20 - 0.35	fn: 0.18 - 0.28	fn: 0.20 - 0.35		
Amount	30 pieces	50 pieces	≥ 100 pieces	
Net price in €	3.70	3.30	2.90	



More insert styles available

# TN.. negative shape - 60°



YUC

## Standard machining with TNUX 160404 L MSE PVD PMKS H

P	M	K	S	N
Vc: 120 - 220	Vc: 80 - 140	Vc: 120 - 210	Vc: 20 - 60	
Ap: 0.20 - 2.00	Ap: 0.20 - 2.00	Ap: 0.20 - 2.00	Ap: 0.20 - 2.00	
fn: 0.12 - 0.24	fn: 0.10 - 0.20	fn: 0.12 - 0.24	fn: 0.10 - 0.16	
Amount	30 pieces	50 pieces	≥ 100 pieces	
Net price in €	3.70	3.30	2.90	



## Standard machining with TNUX 160404 R MSE PVD PMKS H

P	M	K	S	N
Vc: 120 - 220	Vc: 80 - 140	Vc: 120 - 210	Vc: 20 - 60	
Ap: 0.20 - 2.00	Ap: 0.20 - 2.00	Ap: 0.20 - 2.00	Ap: 0.20 - 2.00	
fn: 0.12 - 0.24	fn: 0.10 - 0.20	fn: 0.12 - 0.24	fn: 0.10 - 0.16	
Amount	30 pieces	50 pieces	≥ 100 pieces	
Net price in €	3.70	3.30	2.90	



## Standard machining with TNUX 160408 L MSE PVD PMKS H

P	M	K	S	N
Vc: 120 - 220	Vc: 80 - 140	Vc: 120 - 210	Vc: 20 - 60	
Ap: 0.30 - 3.00	Ap: 0.30 - 3.00	Ap: 0.30 - 3.00	Ap: 0.30 - 3.00	
fn: 0.15 - 0.32	fn: 0.15 - 0.28	fn: 0.15 - 0.32	fn: 0.12 - 0.24	
Amount	30 pieces	50 pieces	≥ 100 pieces	
Net price in €	3.70	3.30	2.90	



## Standard machining with TNUX 160408 R MSE PVD PMKS H

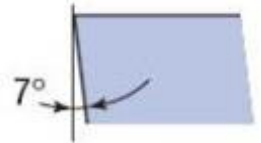
P	M	K	S	N
Vc: 120 - 220	Vc: 80 - 140	Vc: 120 - 210	Vc: 20 - 60	
Ap: 0.30 - 3.00	Ap: 0.30 - 3.00	Ap: 0.30 - 3.00	Ap: 0.30 - 3.00	
fn: 0.20 - 0.35	fn: 0.18 - 0.28	fn: 0.20 - 0.35	fn: 0.12 - 0.24	
Amount	30 pieces	50 pieces	≥ 100 pieces	
Net price in €	3.70	3.30	2.90	



More insert styles available



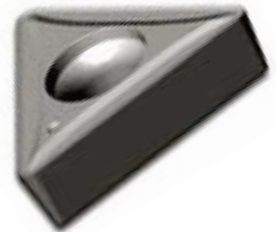
# TC.. positive shape - 60°



YUC

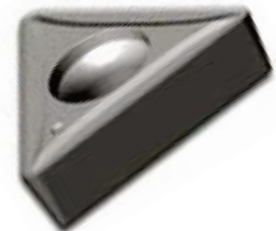
## Standard machining with TCMT 110204 MSE PVD PMK H

P	M	K	S	N
Vc: 120 - 220	Vc: 80 - 140	Vc: 120 - 210		
Ap: 0.20 - 0.80	Ap: 0.20 - 0.80	Ap: 0.20 - 0.80		
fn: 0.08 - 0.16	fn: 0.08 - 0.14	fn: 0.08 - 0.16		
Amount	30 pieces	50 pieces	≥ 100 pieces	
Net price in €	3.40	2.90	2.60	



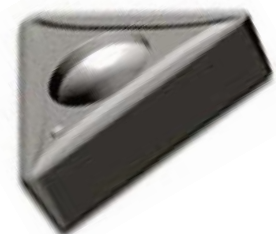
## Standard machining with TCMT 110208 MSE PVD PMK H

P	M	K	S	N
Vc: 120 - 220	Vc: 80 - 140	Vc: 120 - 210		
Ap: 0.30 - 1.20	Ap: 0.30 - 1.20	Ap: 0.30 - 1.20		
fn: 0.12 - 0.20	fn: 0.10 - 0.18	fn: 0.12 - 0.20		
Amount	30 pieces	50 pieces	≥ 100 pieces	
Net price in €	3.40	2.90	2.60	



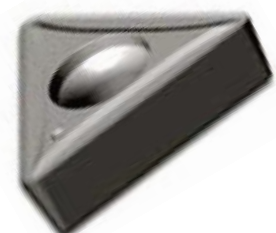
## Standard machining with TCMT 16T308 MSE PVD PMK H

P	M	K	S	N
Vc: 120 - 220	Vc: 80 - 140	Vc: 120 - 210		
Ap: 0.30 - 2.00	Ap: 0.30 - 2.00	Ap: 0.30 - 2.00		
fn: 0.12 - 0.20	fn: 0.10 - 0.20	fn: 0.12 - 0.20		
Amount	30 pieces	50 pieces	≥ 100 pieces	
Net price in €	3.60	3.10	2.80	



## Standard machining with TCMT 16T308 MSE PVD PMK H

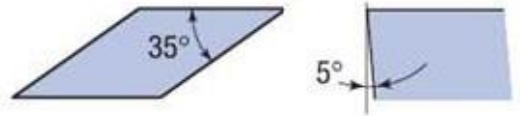
P	M	K	S	N
Vc: 120 - 220	Vc: 80 - 140	Vc: 120 - 210		
Ap: 0.40 - 2.50	Ap: 0.40 - 2.50	Ap: 0.40 - 2.50		
fn: 0.16 - 0.32	fn: 0.14 - 0.28	fn: 0.16 - 0.32		
Amount	30 pieces	50 pieces	≥ 100 pieces	
Net price in €	3.60	3.10	2.80	



More insert styles available

# VB.. positive shape - 35°

YUC



## Finish machining with VBMT 110304 MFE PVD PMK H

P	M	K	S	N
Vc: 120 - 220	Vc: 80 - 140	Vc: 120 - 210		
Ap: 0.20 - 0.80	Ap: 0.20 - 0.80	Ap: 0.20 - 0.80		
fn: 0.08 - 0.12	fn: 0.08 - 0.10	fn: 0.80 - 0.12		
Amount	30 pieces	50 pieces	≥ 100 pieces	
Net price in €	4.10	3.60	3.30	



## Finish machining with VBMT 160404 MFE PVD PMK H

P	M	K	S	N
Vc: 120 - 220	Vc: 80 - 140	Vc: 120 - 210		
Ap: 0.20 - 1.20	Ap: 0.20 - 1.20	Ap: 0.20 - 1.20		
fn: 0.08 - 0.14	fn: 0.08 - 0.12	fn: 0.08 - 0.14		
Amount	30 pieces	50 pieces	≥ 100 pieces	
Net price in €	4.60	4.10	3.80	



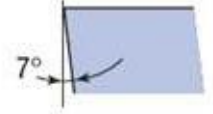
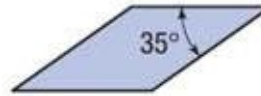
## Finish machining with VBMT 160408 MFE PVD PMK H

P	M	K	S	N
Vc: 120 - 220	Vc: 80 - 140	Vc: 120 - 210		
Ap: 0.30 - 1.50	Ap: 0.30 - 1.50	Ap: 0.30 - 1.50		
fn: 0.12 - 0.20	fn: 0.10 - 0.18	fn: 0.12 - 0.20		
Amount	30 pieces	50 pieces	≥ 100 pieces	
Net price in €	4.60	4.10	3.80	



More insert styles available

# VC.. positive shape - 35°



YUC

## Finish machining with VCMT 160404 MFE PVD PMK H

P	M	K	S	N
Vc: 120 - 220	Vc: 80 - 140	Vc: 120 - 210		
Ap: 0.20 - 1.20	Ap: 0.20 - 1.20	Ap: 0.20 - 1.20		
fn: 0.08 - 0.14	fn: 0.08 - 0.12	fn: 0.08 - 0.14		
Amount	30 pieces	50 pieces	≥ 100 pieces	
Net price in €	4.60	4.10	3.80	



## Finish machining with VCMT 160408 MFE PVD PMK H

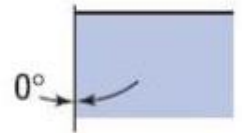
P	M	K	S	N
Vc: 120 - 220	Vc: 80 - 140	Vc: 120 - 210		
Ap: 0.30 - 1.50	Ap: 0.30 - 1.50	Ap: 0.30 - 1.50		
fn: 0.12 - 0.20	fn: 0.10 - 0.18	fn: 0.12 - 0.20		
Amount	30 pieces	50 pieces	≥ 100 pieces	
Net price in €	4.60	4.10	3.80	



More insert styles available

# WN.. negative shape - 80°

YUC



## Fine standard machining with WNMP 060404 FSE PVD PMKS H

P	M	K	S	N
Vc: 120 - 220	Vc: 80 - 140	Vc: 120 - 210	Vc: 20 - 60	
Ap: 0.10 - 1.50	Ap: 0.10 - 1.50	Ap: 0.10 - 1.50	Ap: 0.10 - 1.50	
fn: 0.08 - 0.16	fn: 0.08 - 0.14	fn: 0.08 - 0.16	fn: 0.08 - 0.12	
Amount	30 pieces	50 pieces	≥ 100 pieces	
Net price in €	3.70	3.20	2.90	



## Fine standard machining with WNMP 060408 FSE PVD PMKS H

P	M	K	S	N
Vc: 120 - 220	Vc: 80 - 140	Vc: 120 - 210	Vc: 20 - 60	
Ap: 0.20 - 2.00	Ap: 0.20 - 2.00	Ap: 0.20 - 2.00	Ap: 0.20 - 2.00	
fn: 0.12 - 0.20	fn: 0.10 - 0.18	fn: 0.12 - 0.20	fn: 0.10 - 0.16	
Amount	30 pieces	50 pieces	≥ 100 pieces	
Net price in €	3.70	3.20	2.90	



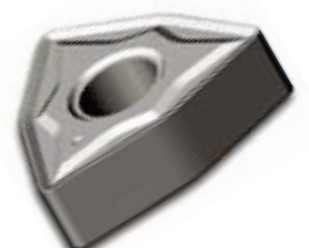
## Standard machining with WNMG 060404 MSE PVD PMK H

P	M	K	S	N
Vc: 120 - 220	Vc: 80 - 140	Vc: 120 - 210		
Ap: 0.20 - 2.00	Ap: 0.20 - 2.00	Ap: 0.20 - 2.00		
fn: 0.10 - 0.20	fn: 0.10 - 0.18	fn: 0.10 - 0.20		
Amount	30 pieces	50 pieces	≥ 100 pieces	
Net price in €	3.70	3.20	2.90	



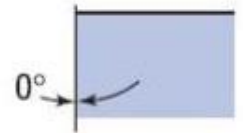
## Standard machining with WNMG 060408 MSE PVD PMK H

P	M	K	S	N
Vc: 120 - 220	Vc: 80 - 140	Vc: 120 - 210		
Ap: 0.30 - 3.00	Ap: 0.30 - 3.00	Ap: 0.30 - 3.00		
fn: 0.12 - 0.24	fn: 0.10 - 0.20	fn: 0.12 - 0.24		
Amount	30 pieces	50 pieces	≥ 100 pieces	
Net price in €	3.70	3.20	2.90	



More insert styles available

# WN.. negative shape - 80°



YUC

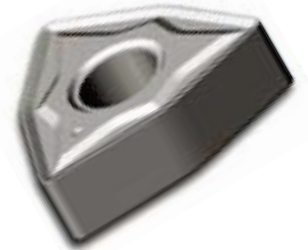
## Fine standard machining with WNMP 080408 FSE PVD PMKS H

P	M	K	S	N
Vc: 120 - 220	Vc: 80 - 140	Vc: 120 - 210	Vc: 20 - 60	
Ap: 0.30 - 2.50	Ap: 0.30 - 2.50	Ap: 0.30 - 2.50	Ap: 0.30 - 2.50	
fn: 0.12 - 0.24	fn: 0.10 - 0.20	fn: 0.12 - 0.24	fn: 0.10 - 0.16	
Amount	30 pieces	50 pieces	≥ 100 pieces	
Net price in €	4.10	3.60	3.30	



## Standard machining with WNMG 080404 MSE PVD PMK H

P	M	K	S	N
Vc: 120 - 220	Vc: 80 - 140	Vc: 120 - 210		
Ap: 0.20 - 2.50	Ap: 0.20 - 2.50	Ap: 0.20 - 2.50		
fn: 0.10 - 0.20	fn: 0.10 - 0.18	fn: 0.10 - 0.20		
Amount	30 pieces	50 pieces	≥ 100 pieces	
Net price in €	4.10	3.60	3.30	



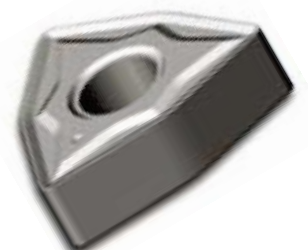
## Standard machining with WNMG 080408 MSE PVD PMK H

P	M	K	S	N
Vc: 120 - 220	Vc: 80 - 140	Vc: 120 - 210		
Ap: 0.30 - 3.00	Ap: 0.30 - 3.00	Ap: 0.30 - 3.00		
fn: 0.15 - 0.30	fn: 0.12 - 0.26	fn: 0.15 - 0.30		
Amount	30 pieces	50 pieces	≥ 100 pieces	
Net price in €	4.10	3.60	3.30	



## Standard machining with WNMG 060412 MSE PVD PMK H

P	M	K	S	N
Vc: 120 - 220	Vc: 80 - 140	Vc: 120 - 210		
Ap: 0.40 - 3.50	Ap: 0.40 - 3.50	Ap: 0.40 - 3.50		
fn: 0.20 - 0.45	fn: 0.20 - 0.36	fn: 0.20 - 0.45		
Amount	30 pieces	50 pieces	≥ 100 pieces	
Net price in €	4.10	3.60	3.30	



More insert styles available



0031 6 48 27 77 13



info@amwsystems.nl  
www.amwsystems.nl